

Reception
289.1
@100 sqft/ppl = 3 occ.

Office
100.2
@100 sqft/ppl = 1 occ.

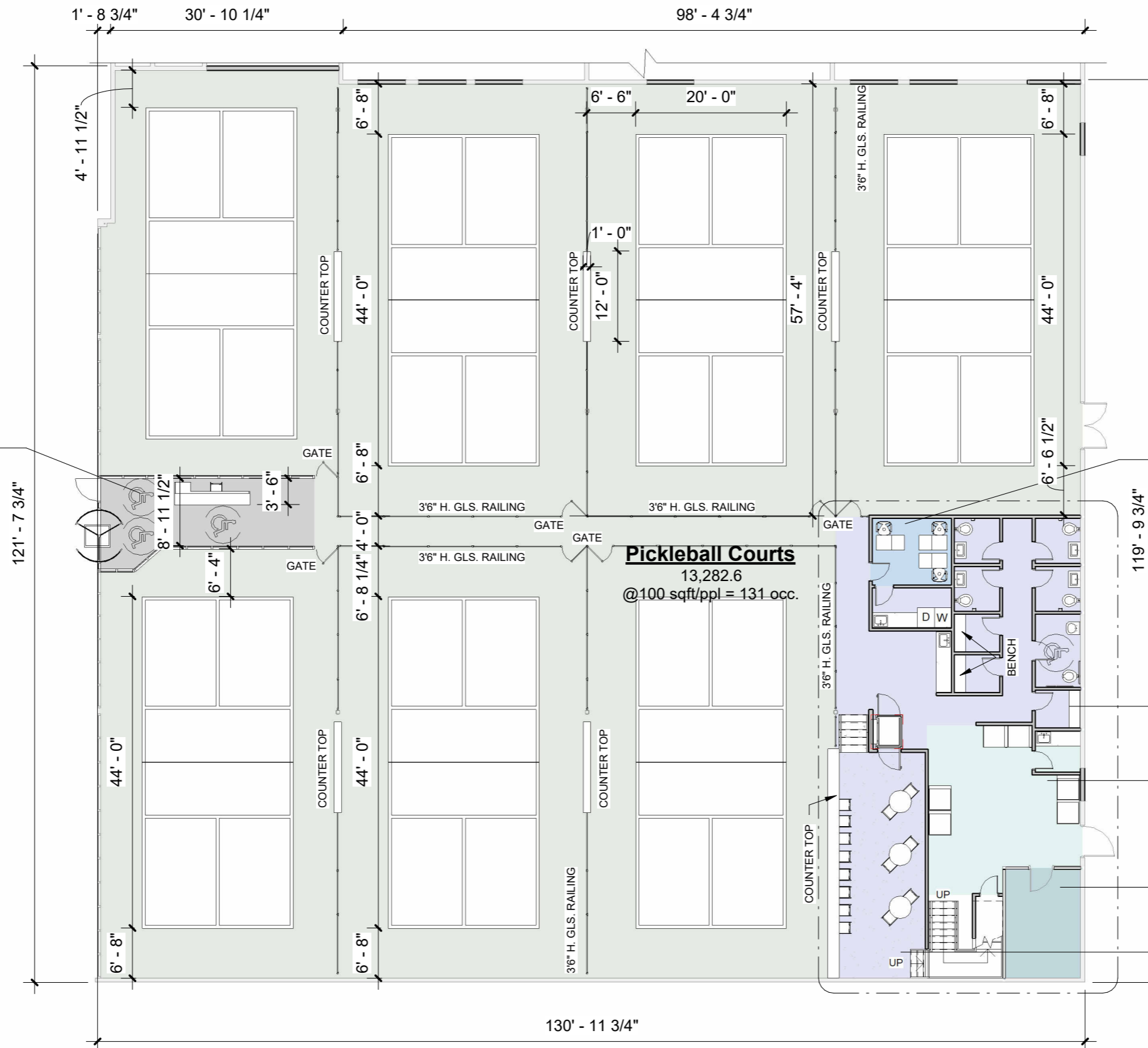
Pickleball Courts
13,282.6
@100 sqft/ppl = 131 occ.

Amenity Area
1,219.4

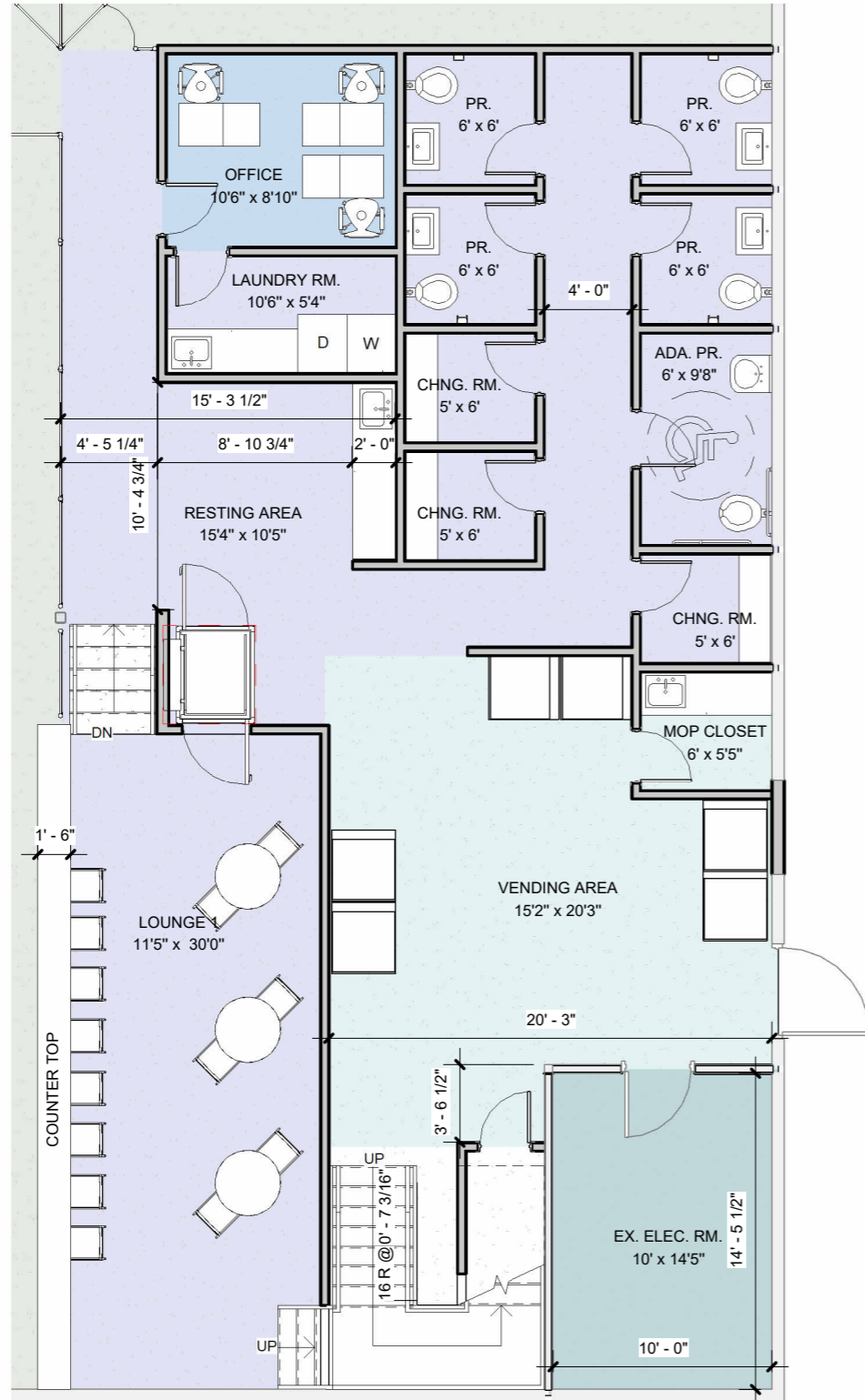
Vending Area
424.8
@100 sqft/ppl = 5 occ.

Ex. Electrical Room
156.5

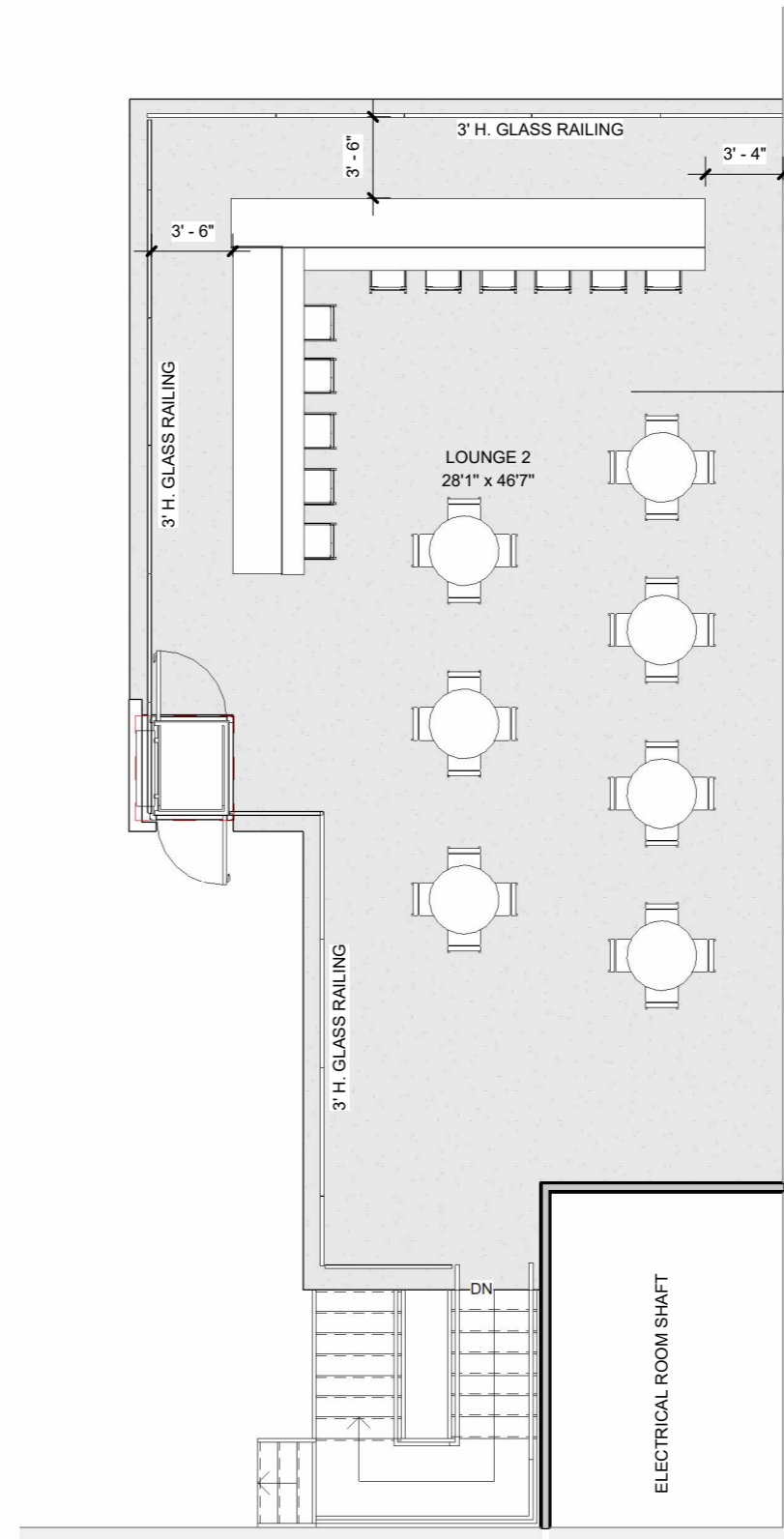
Lounge 1
Redundant Area
@100 sqft/ppl = 14 occ.



1 FIRST FLOOR
AC-5.0 SCALE: 1/16" = 1'-0" TOTAL 1ST & 2ND FLR. OCC. LOAD = 204



3 FIRST FLOOR - Amenity Area Callout
 AC-5.1 SCALE: 1/8" = 1'-0"



Lounge 2
 1,237.5
 @100 sqft/ppl = 50 occ.

2 SECOND FLOOR
 AC-5.1 SCALE: 1/8" = 1'-0" OCCUPANT LOAD = 50

2410

3/15/2024 3:56:46 PM

AC-5.1

